

CommunityMatters™

A Monthly Newsletter for the ABET Community

October 2007

InsideABET

International Accreditation to Begin with Visits to 21 Programs in Six Countries

The 2007-2008 cycle will see the first of ABET's international accreditation visits, commencing this fall with representatives from two commissions going to 21 foreign programs on four continents. These international accreditation visits will be conducted using the same accreditation criteria and the same policies and procedures that are employed during domestic visits.

In the fall of 2005, the ABET Board of Directors unanimously approved to develop a plan that would begin full ABET accreditation of programs at foreign institutions and phase out substantial equivalency evaluations. In the past, ABET had evaluated programs outside the U.S., by institutional request, to determine if they were "substantially equivalent," or comparable in educational outcomes but perhaps different in format or method of delivery, to ABET-accredited programs.

The 21 programs that are being visited this fall will be the first programs that are housed in foreign countries but are not extensions of institutions based in the United States that may apply for ABET accreditation. The Engineering Accreditation Commission (EAC) has scheduled visits to institutions in four countries — Germany, Kuwait, Mexico, and Turkey — and some of these visits will cover multiple engineering programs at a single institution. In addition, the Computing Accreditation Commission (CAC) is sending volunteers to evaluate programs at institutions in three countries — Mexico, South Africa, and the United Arab Emirates.

Maryanne Weiss, ABET's Accreditation Director, said that the commencement of these visits has been going smoothly. ABET has sought the approval from the highest

— continued on page 2

VolunteerSpotlight

John Prados

John W. Prados, Ph.D., P.E., is the kind of volunteer that every organization dreams of finding. He's well-respected in his field, he's hard-working, and he's been willing to stick around for a really long time!

John is Vice President and University Professor Emeritus at the University of Tennessee, from which he received his master of science and Ph.D. in chemical engineering and where he has been employed since 1953. He eventually became head of the chemical engineering department and went on to hold many administrative positions, ranging from Acting Director of Energy Conversion Programs at the University of Tennessee Space Institute to Vice President for Academic Affairs of the statewide UT system. Though he retired in 2001, he continues to teach in the chemical engineering department part-time.

Throughout much of his illustrious career, John has made time for ABET activities. He first became involved with ABET's predecessor, the Engineers' Council for Professional Development, as a chemical engineering evaluator in 1971. He chaired the Engineering

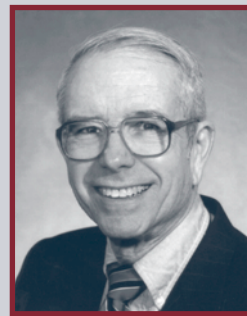
Accreditation Commission for the 1984-85 accreditation cycle. Then, John went on to become a representative from the American Institute of Chemical Engineers on the ABET Board of Directors from 1988 to 1991 and assumed the position of ABET President for the 1991-92 year. It was no wonder that he was named a recipient of the L.E. Grinter

Distinguished Service Award, ABET's highest honor, in 1993.

Furthermore, John is proof that life with ABET does not have to stop after a term as Past President ends. His most recent project has been serving as the editor for *A Proud Legacy of Quality Assurance in the Preparation of Technical Professionals*, the 250-plus-page ABET

75th anniversary retrospective book that will be unveiled at the upcoming Annual Meeting.

"For more than 35 years, ABET has been a big part of my life," John said. "From beginning as a chemical engineering program evaluator to editing this retrospective volume, it's been quite a ride — lots of demanding, unpaid jobs but rich rewards in professional growth and wonderful friendships. I feel blessed to have had this opportunity!"



LookAhead

Oct. 30 — Faculty Workshop on Assessing Program Outcomes, Incline Village, NV

Oct. 31 — 2007 Commission Summit, Incline Village, NV

Nov. 1-2 — 2007 ABET Annual Meeting – "The Global Workforce: The Future of Technological Education"

Nov. 3 — Fall Board of Directors Meeting, Incline Village, NV

InsideABET

— continued from page 1

educational accreditation body or government organization in each of the countries in which the visits are scheduled. Each of these organizations has been invited to send observers on the visits, and some are indeed naming representatives who wish to learn more about the ABET accreditation process and participate on the visiting teams.

As with domestic accreditation visits, the actions for these 21 programs will be determined when the respective commissions convene to discuss all programs evaluated during the 2007-2008 cycle at the Summer Commission Meeting in July.

Six Faculty Workshops Scheduled Through 2008

Are you an applied science, computing, engineering, or technology faculty member who wishes to develop your assessment skills? Then, you should sign up for one of the upcoming ABET Faculty Workshop on Assessing Program Outcomes. During these interactive, daylong events, Gloria Rogers, Ph.D., ABET's Associate Executive Director for Professional Services, guides participants as they sharpen their assessment knowledge, broaden their understanding of continuous improvement processes, and learn new assessment tools they can implement when they return to campus.

Currently, there are six workshops in five cities scheduled from December 2007 through June 2008:

- ▶ Saturday, December 1, 2007
San Antonio, TX
Register by November 16, 2007.
- ▶ Saturday, February 9, 2008
Tampa, FL
Register by January 25, 2008.

- ▶ Saturday, March 15, 2008
Nashville, TN
Registration deadline TBD.
- ▶ Saturday, April 12, 2008
Baltimore, MD
Register by March 28, 2008.
- ▶ Saturday, May 17, 2008
Baltimore, MD
Register by May 2, 2008.
- ▶ Saturday, June 21, 2008
Pittsburgh, PA
Registration deadline TBD.

The registration fee for each workshop is \$350. Generally, registration for the workshops will remain open until three weeks before the event, but registration deadlines for specific workshops will be listed on the "LookAhead" calendar in upcoming issues of *CommunityMatters* and on the ABET website at www.abet.org/workshop.shtml.

More ABET History — What Prompted the Founding of the ECPD?

ABET's predecessor, the Engineers' Council for Professional Development (ECPD), was established in 1932, but what triggered the seven founder societies to start an organization to evaluate engineering programs?

In 1907, the Society for the Promotion of Engineering Education (now the American Society for Engineering Education) invited the top engineering and science organizations of the time to join in forming a Joint Committee on Engineering Education, charged to examine the educational requirements for the various engineering disciplines and to make recommendations regarding engineering

curricula. However, the resulting report was largely ignored, mostly due to social and economic conditions after World War I, and little follow-up action seems to have taken place.

The most significant impetus for an engineering profession-wide approach to quality assurance occurred in the 1920s. The Society for the Promotion of Engineering Education commissioned a major study, chaired by Case School of Applied Science President William E. Wickenden, between 1923 and 1929. The results were published in 1930 as a two-volume report titled, *A Comparative Study of Engineering Education in the United States and Europe*, which later became known as "The Wickenden Report."

One of the report's principle recommendations was to create an organization that would set standards for engineering educational programs and to conduct reviews of programs for compliance with these standards. This was realized with the formation of the ECPD two years later and continues today through ABET's accreditation activities.

ABET's Annual Meeting and 75th Anniversary Bash Is Almost Here!

There's still time to register for ABET's big annual events in Incline Village, Nevada! The Commission Summit, which will be held on Wednesday, October 31, will teach faculty how to turn the self-study into a solid foundation for evaluation against outcomes assessment criteria. The 2007 ABET Annual Meeting

— *The Global Workforce: The Future of Technological Education* — will take place on Thursday, November 1, and Friday, November 2. Come and celebrate ABET's 75th anniversary!

Register at www.abet.org/annual.shtml!



ABETOnline

- ▶ Register for the 2007 Annual Meeting at www.abet.org/annual.shtml.
- ▶ Get ideas for promoting your accreditation at www.abet.org/promote.shtml.
- ▶ See Gloria's assessment resources at www.abet.org/assessment.shtml.

CommunityMatters™

CommunityMatters is a monthly publication of ABET, Inc., produced for and distributed to more than 3,000 stakeholders, including ABET-accredited programs; ABET commission, Board, and council members; ABET member societies; and program evaluators.

Editor: Gloria Rogers, Associate Executive Director of Professional Services

Writers: Liz Glazer, Communications Manager

Keryl Cryer, Communications Specialist

Questions or comments: eglazer@abet.org

CommunityMatters is online: www.abet.org/newsletter.shtml

Copyright© 2007 by ABET, Inc.® Printed in the United States of America. All rights reserved.

Assessment101

Assessment Tips with Gloria Rogers, Ph.D.

Got Examples?

There are a lot of questions about different aspects

of the continuous quality improvement (CQI) process as it relates to academic programs. The most commonly asked question is, "Do you have any examples?"

Providing an example can be very problematic. Often, the example is interpreted as the 'gold standard' for any given process when, in fact, there is no one right way to develop or implement the various parts of the CQI process. As a result, ABET has been reluctant to provide such examples for the fear that every program will have a CQI process that looks exactly like the one example, and multiple perspectives and opportunities for innovation will be lost.

Having said that, if several good examples from each of the four areas that ABET accredits — applied science, computing, engineering, and technology — are available, then we can provide a wide variety of ways/processes that could be emulated in the accreditation process instead of producing one 'gold standard' model. To that effect, ABET would like to invite the submission of examples related to the CQI process at the program level. Each submission will be reviewed before being posted to the ABET assessment webpage. Examples are being sought for each of the topics listed below.

- ▶ **Program educational objectives**, including the following:
 - ▶ Who are your constituents for this process?
 - ▶ How were these constituents involved in the development of the objectives?
- ▶ **Assessment plans** for objectives, including the following:
 - ▶ Who is assessed?
 - ▶ How often are they assessed?
 - ▶ With which assessment instrument(s)?
- ▶ **Program learning outcomes**, including the following:
 - ▶ Information about how the outcomes were developed
 - ▶ The list of program outcomes must include performance criteria.
- ▶ **Rubrics** that have been developed to demonstrate levels of student performance

related to the performance criteria of an outcome(s)

- ▶ **Curriculum mapping**, including the following:
 - ▶ How the curriculum is mapped to performance criteria (including an example of the instrument, if available)
 - ▶ Examples of a curriculum map
- ▶ **Assessment tools**, including any of the following:
 - ▶ Surveys used for either objectives or outcomes, including how they are implemented (i.e., who receives them, how often are they administered)
 - ▶ Any assessment methods for which there are established protocols (focus groups, portfolios, simulations, etc.) indicating the target audience and how they are administered
- ▶ **Continuous improvement process documentation** that includes how the CQI process works in your program (usually in graphical form but in any format that explains how the program has conceptualized the CQI process)

Once there are enough examples to be representative of different programs and types of institutions, they will be posted on the ABET assessment webpage for others to view. Each program represented will be notified that its submission(s) has been selected and will be asked to grant permission before its example(s) is posted on the ABET website. If you have any questions about the request for examples, please contact me at grogers@abet.org.

IDEAL

Now Accepting Applications
for the 2008 sessions of the Institute
for the Development of Excellence
in Assessment Leadership (IDEAL)

January 7 – 11 • Phoenix, Arizona
August 4 – 8 • Baltimore, Maryland

Apply today at
www.abet.org/ideal.shtml

YourCorner

Board of Directors

New Board Member Orientation will be held on October 31 in Incline Village, NV. While new members are required to attend, returning members are welcome to join them as well. If you would like to attend, please contact Rachel Daucher at rdaucher@abet.org.

Commissioners

With visit season upon us, make sure that you and your team members are referring to ABET's travel policy and booking instructions as you make your arrangements. Log in through the "Commissioners" link on www.abet.org, and click on the "ABET Travel Policy and Expense Forms" link.

Also, don't forget to download the latest version of the expense report form from that site. You will need to submit a signed version of this form with *original* receipts to guarantee prompt reimbursement for expenses incurred during fall visits.

Institutions

Make sure that you review section II.E.3, "On-Site Visit," of ABET's *Accreditation Policy and Procedure Manual* again before the visiting team comes to your campus and that you are communicating with your team chair about last-minute details.

Member Societies

Thank you to all of the representatives who attended last month's Society Summit! Now, your assignment is to spread the word about the best practices shared during the event to others involved in your society's accreditation activities. This is your chance to help your organization implement the process improvements that PAVE is bringing about!

Also, commission nominations are coming up! Stay tuned for more details.

Program Evaluators

Don't forget to download the latest version of the expense report form from the secure website. You will need to submit a signed version of this form with *original* receipts to your team chair to guarantee prompt reimbursement for expenses incurred during fall visits.

Member Societies

ABET is a federation of 28 professional and technical societies representing the fields of applied science, computing, engineering, and technology:

American Academy of Environmental Engineers	Health Physics Society
American Congress on Surveying and Mapping	IEEE, Inc.
American Industrial Hygiene Association	Institute of Industrial Engineers, Inc.
American Institute of Aeronautics and Astronautics, Inc.	ISA
American Institute of Chemical Engineers	Materials Research Society
American Nuclear Society	National Council of Examiners for Engineering and Surveying
American Society of Agricultural and Biological Engineers	National Institute of Ceramic Engineers
American Society of Civil Engineers	National Society of Professional Engineers
American Society for Engineering Education	Society of Automotive Engineers
American Society of Heating, Refrigerating, and Air-Conditioning Engineers, Inc.	Society of Manufacturing Engineers
American Society of Safety Engineers	Society for Mining, Metallurgy, and Exploration, Inc.
ASME	Society of Naval Architects and Marine Engineers
Biomedical Engineering Society	Society of Petroleum Engineers
CSAB, Inc.	The Minerals, Metals, and Materials Society



111 Market Place, Suite 1050
Baltimore, MD 21202-4012

NON-PROFIT ORG.
U.S. POSTAGE
PAID
BALTIMORE, MD
PERMIT No. 5196