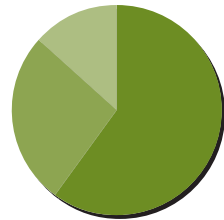


STATISTICS

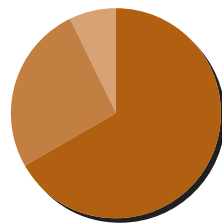
PART A 2006-2007 CYCLE DATA

Table 1
Evaluations Conducted
(Number of Programs)

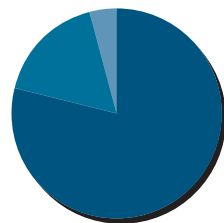
	ASAC	CAC	EAC	TAC	Total
General Reviews	9	56	329	138	532
Interim Reports	4	22	71	50	147
Interim Visits	2	6	17	25	50
Total	15	84	417	213	729



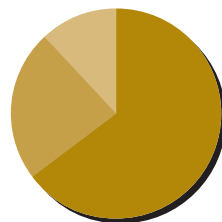
ASAC
 ● 60% GR (9)
 ● 26.7% IR (4)
 ● 13.3% IV (2)



CAC
 ● 66.7% GR (56)
 ● 26.2% IR (22)
 ● 7.1% IV (6)



EAC
 ● 78.9% GR (329)
 ● 17% IR (71)
 ● 4.1% IV (17)



TAC
 ● 64.8% GR (138)
 ● 23.5% IR (50)
 ● 11.7% IV (25)

Table 2
Programs Visited
by Curricular Area*

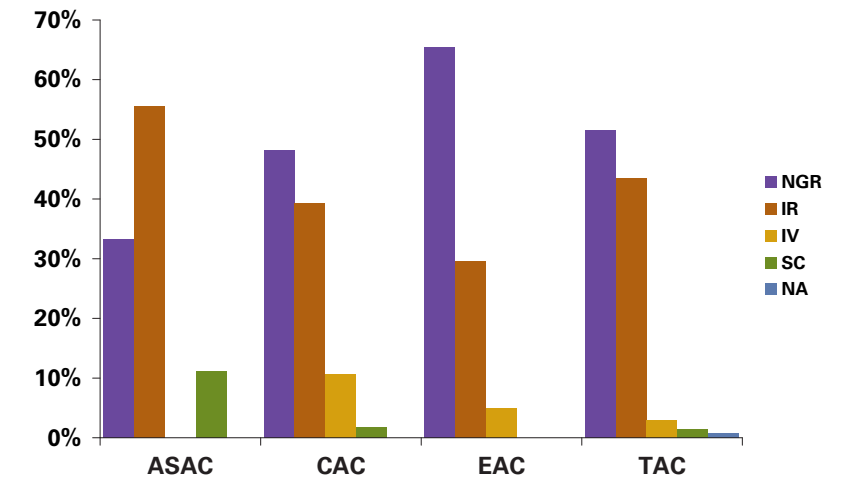
	ASAC		CAC	EAC		TAC		Total
	Bachelor	Master		Bachelor	Master	Associate	Bachelor	
Aerospace			11					11
Agricultural					8			8
Air Conditioning							1	1
Architectural					2		5 2	9
Automotive							1	1
Bioengineering and Biomedical					13		2 2	17
Ceramic					1			1
Chemical					32 1			33
Civil					41 1		6 3	51
Computer					42 1		5 11	59
Computer Science			53					53
Construction					2		1 7	10
Electrical					47 1		24 21	93
Electromechanical							2 6	8
Engineering							4	4
Engineering Management					2			2
Engineering Mechanics					1			1
Engineering Physics and Engineering Science					18			18
Environmental					8 1			9
Geological					3			3
Health Physics			1					1
Industrial					13 1		1	15
Industrial Hygiene								6
Information Systems			4					4
Information Technology			3					3
Manufacturing					1		5 5	11
Marine							1	1
Materials					13			13
Mechanical					54 1		19 12	86
Mining					1			1
Naval Architecture and Marine					2			2
Nuclear and Radiological					3		1	4
Ocean					1			1
Others			2		10		5 5	22
Petroleum					3			3
Safety					1			1
Software					5			5
Surveying and Geomatics					2		3 2	10
Telecommunications							1	1
Total	4	7	62		339	7	78 85	582

* Individual programs may embrace more than one curricular area and, thus, may be counted more than once in this table.

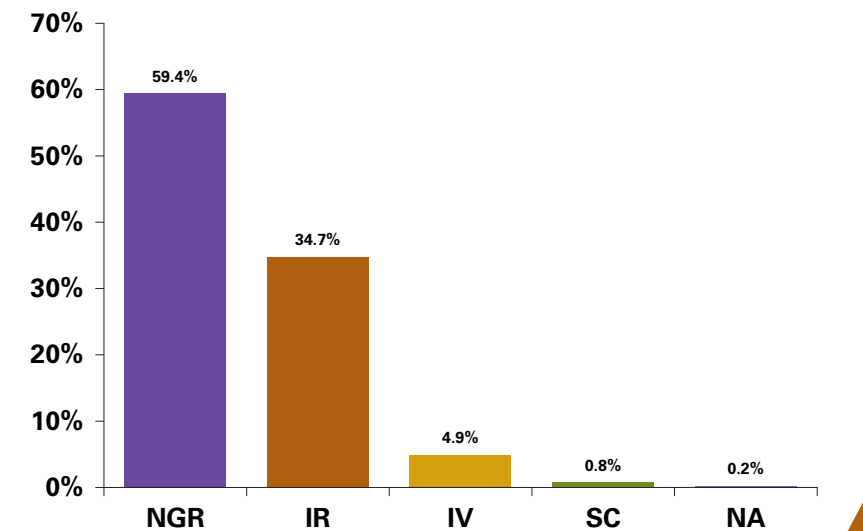
Table 3
Actions for General Reviews

	ASAC		CAC		EAC		TAC		All	
	#	%	#	%	#	%	#	%	#	%
NGR	3	33.3	27	48.2	214	65.4	71	51.4	315	59.4
IR	5	55.6	22	39.3	97	29.7	60	43.5	184	34.7
IV	0	0.0	6	10.7	16	4.9	4	2.9	26	4.9
SC	1	11.1	1	1.8	0	0.0	2	1.4	4	0.8
NA	0	0.0	0	0.0	0	0.0	1	0.7	1	0.2

Actions for General Reviews, 2006-2007



Actions for General Reviews
Across All Commission, 2006-2007

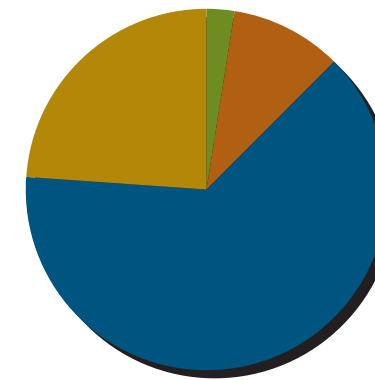


**Table 4
Programs Accredited
as of 10/1/07***

	ASAC			CAC	EAC		TAC		Total
	Associate	Bachelor	Master		Bachelor	Master	Associate	Bachelor	
Aeronautical							1		1
Aerospace					64	4			68
Agricultural					51				51
Air Conditioning								3	3
Architectural					16	1	21	7	45
Automotive								2	2
Bioengineering and Biomedical					50		3	2	55
Ceramic					6				6
Chemical					159	1			160
Civil					225	1	45	26	297
Computer					202	3	25	49	279
Computer Science				249					249
Construction					7		11	24	42
Drafting and Design (General)								1	1
Drafting and Design (Mechanical)							11		11
Electrical					302	3	109	112	526
Electromechanical							2	7	9
Engineering							2	8	10
Engineering Management					8	1			9
Engineering Mechanics					6				6
Engineering Physics and Engineering Science					68				68
Environmental					51	7	4		62
Geological					16				16
Health Physics		3	5						8
Industrial					95	1	7	8	111
Industrial and Quality Management		1							1
Industrial Hygiene		6	37						43
Information Systems				29					29
Information Technology				3					3
Instrumentation and Control Systems							3	2	5
Manufacturing					21	1	9	26	57
Materials					60				60
Mechanical					284	2	67	70	423
Metallurgical					9				9
Mining					13				13
Naval Architecture and Marine					11			2	13
Nuclear and Radiological					19	1	2	2	24
Ocean					7	1			8
Others				5	29	3	12	14	63
Petroleum					16				16
Safety	2	9	2						13
Software					15				15
Surveying and Geomatics		9			7		7	5	28
Telecommunications							3	5	8
Total	2	28	44	286	1817	30	347	372	2926

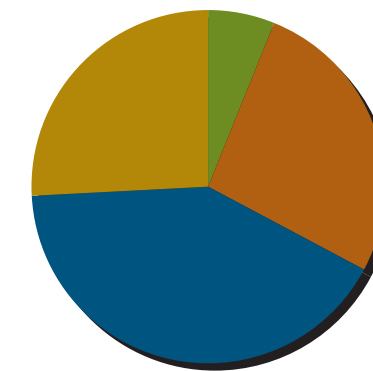
* Individual programs may embrace more than one curricular area and, thus, may be counted more than once in this table.

Accredited Programs by Commission



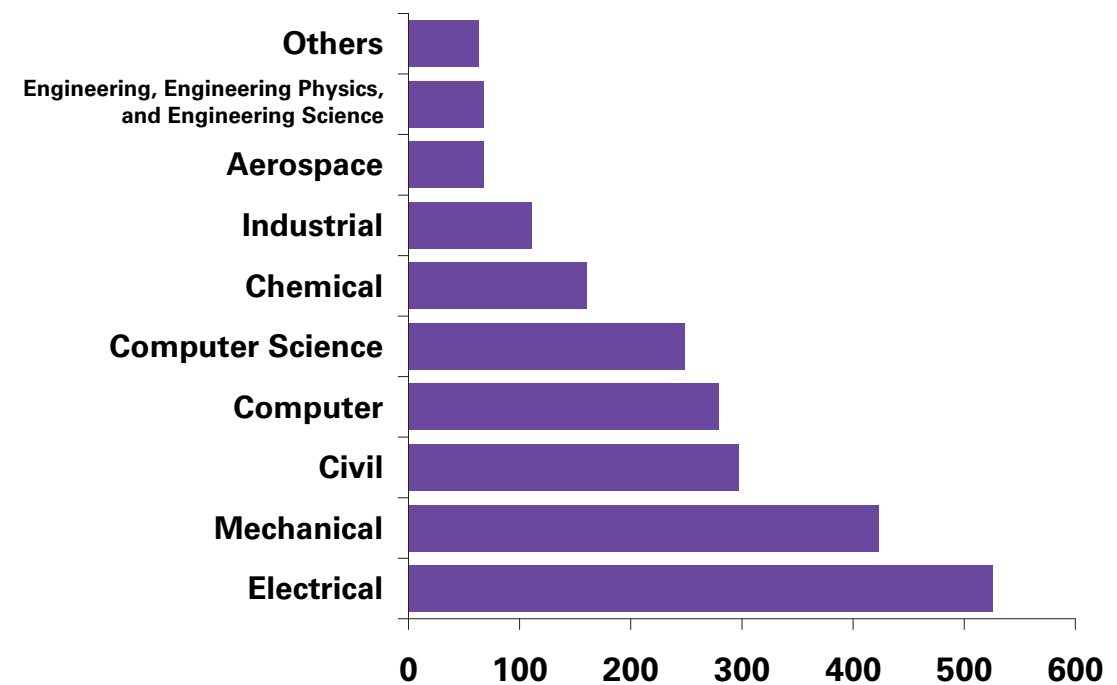
- 3% ASAC (73)
- 10% CAC (284)
- 63% EAC (1,798)
- 24% TAC (673)

Institutions by Commission



- 6% ASAC (55)
- 27% CAC (237)
- 41% EAC (368)
- 26% TAC (229)

10 Largest Curricular Areas by Number of Accredited Programs



STATISTICS

PART B ACCREDITATION TREND DATA

Table 1
Number of Accredited Programs and Institutions Having Accredited Programs, 1997-2007**

	ASAC		CAC		EAC		TAC		All*	
	Pgms	Insts	Pgms	Insts	Pgms	Insts	Pgms	Insts	Pgms	Insts
1997	63	48	162	156	1,596	327	782	248	2,590	555
1998	58	45	167	161	1,628	330	741	239	2,582	552
1999	60	46	171	165	1,674	337	736	241	2,630	559
2000	64	48	183	173	1,700	342	725	242	2,659	567
2001	72	53	198	183	1,732	347	734	243	2,726	573
2002	73	53	215	191	1,760	349	713	235	2,749	572
2003	74	54	241	204	1,798	358	724	233	2,823	583
2004	72	55	261	219	1,827	365	717	234	2,862	591
2005	75	56	285	236	1,839	370	729	237	2,911	600
2006	70	53	286	236	1,819	371	702	233	2,859	597
2007	71	53	284	237	1,798	368	667	228	2,803	591

* Individual programs may embrace more than one curricular area and, thus, may be counted more than once in this table.
** Data above may differ from that reported in previous versions of this publication as a result of retroactive accreditation.

Increase/Decrease in Number of Accredited Programs by Commission, 1997-2007

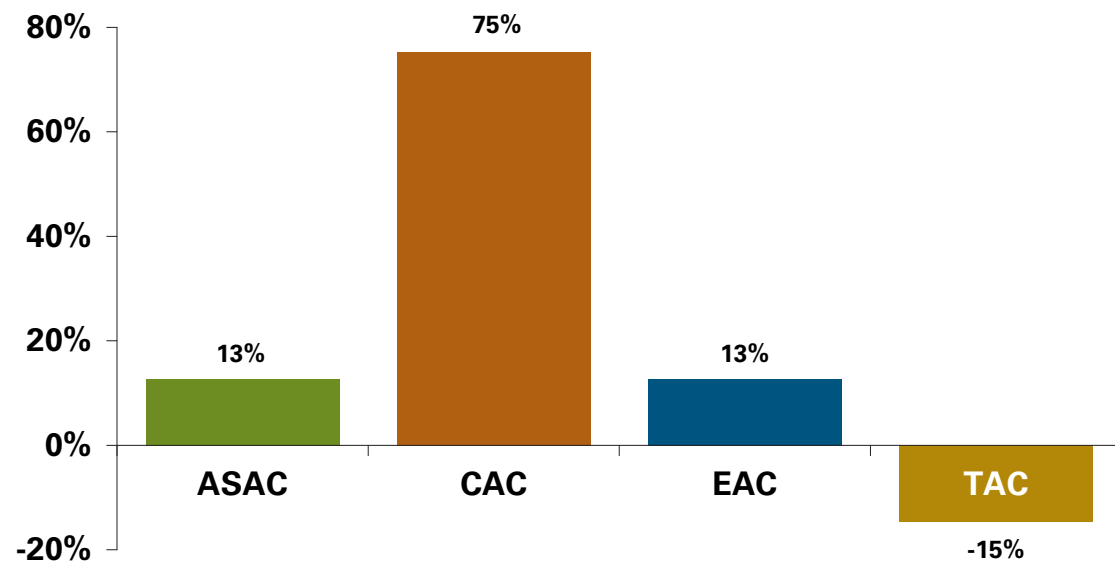


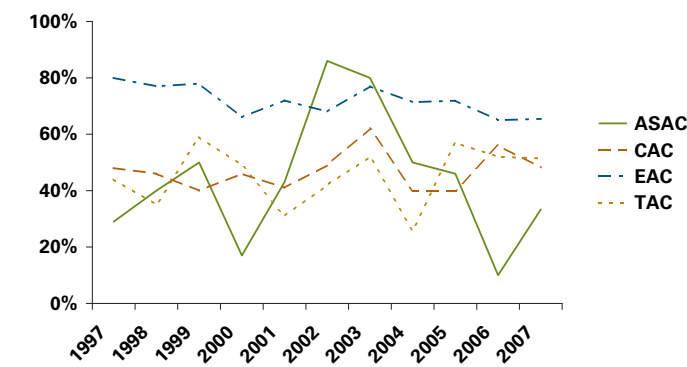
Table 2
Actions for General Reviews, 1997-2007* [percentages]

	ASAC					CAC*				
	NGR	IR	IV	SC	NA	NGR	IR	IV	SC	NA
1997	29%	29%	43%	0%	0%	48%	32%	16%	0%	3%
1998	40%	40%	10%	5%	5%	46%	23%	31%	0%	0%
1999	50%	25%	25%	0%	0%	40%	26%	20%	14%	0%
2000	17%	83%	0%	0%	0%	46%	29%	11%	7%	7%
2001	43%	57%	0%	0%	0%	41%	27%	24%	2%	5%
2002	86%	14%	0%	0%	0%	49%	27%	16%	5%	3%
2003	80%	0%	20%	0%	0%	62%	10%	14%	10%	3%
2004	50%	43%	7%	0%	0%	40%	40%	8%	8%	4%
2005	46%	31%	23%	0%	0%	40%	46%	10%	2%	2%
2006	10%	90%	0%	0%	0%	56%	32%	12%	0%	0%
2007	33%	56%	0%	11%	0%	48%	39%	11%	2%	0%

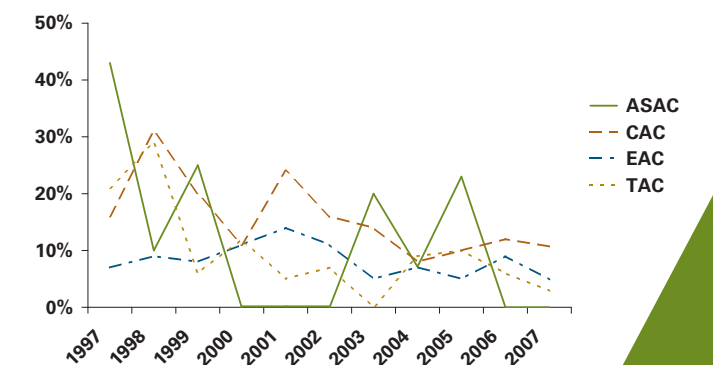
	EAC					TAC				
	NGR	IR	IV	SC	NA	NGR	IR	IV	SC	NA
1997	80%	10%	7%	2%	1%	44%	33%	21%	1%	1%
1998	77%	12%	9%	3%	1%	35%	28%	29%	7%	3%
1999	78%	11%	8%	3%	1%	59%	34%	6%	0%	0%
2000	66%	22%	11%	1%	1%	49%	38%	12%	1%	0%
2001	72%	13%	14%	1%	1%	31%	38%	5%	0%	0%
2002	68%	21%	11%	1%	0%	42%	52%	7%	0%	0%
2003	77%	17%	5%	1%	0%	52%	47%	0%	1%	0%
2004	71%	20%	7%	1%	1%	26%	65%	9%	0%	0%
2005	72%	22%	5%	1%	0%	57%	32%	10%	0%	1%
2006	65%	26%	9%	0%	0%	52%	42%	6%	0%	0%
2007	65%	30%	5%	0%	0%	51%	43%	3%	1%	1%

*CSAC/CSAB actions are shown as the ABET equivalents for 1997-2001: NGR (6V), IR (6VRI), IV (3V), SC, and NA.

NGR Actions for General Reviews

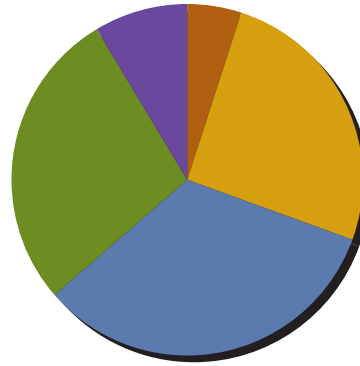


IV Actions for General Reviews



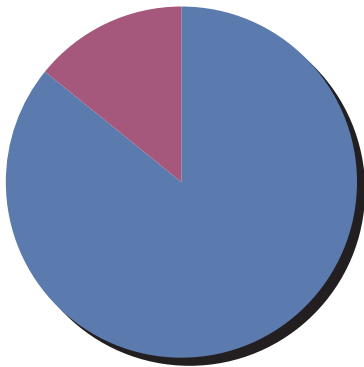
STATISTICS

PART C VOLUNTEER POOL CHARACTERISTICS*



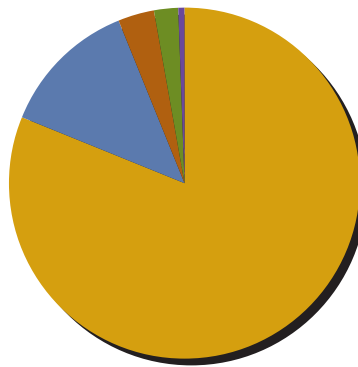
Age

- 5% 30-39 (81)
- 26% 40-49 (403)
- 33% 50-59 (519)
- 28% 60-69 (441)
- 8% 70-79 (134)



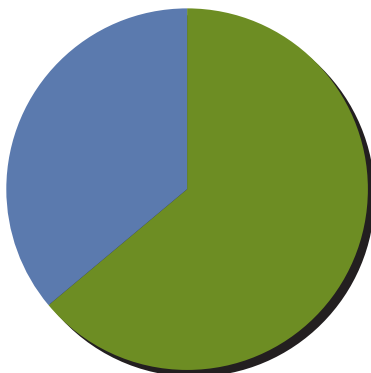
Gender

- 86% Male (1,697)
- 14% Female (279)



Ethnicity

- 82% White, Not of Hispanic Origin (1,481)
- 13% Asian or Pacific Islander (234)
- 3% Black, Not of Hispanic Origin (59)
- 2% Hispanic (44)
- <1% American Indian or Alaskan Native (9)



Current Position

- 64% Academe (1,456)
- 36% Industry (823)



Average Years of Experience in Background

22.1

*Data are self-reported and are current as of the time of publication.