

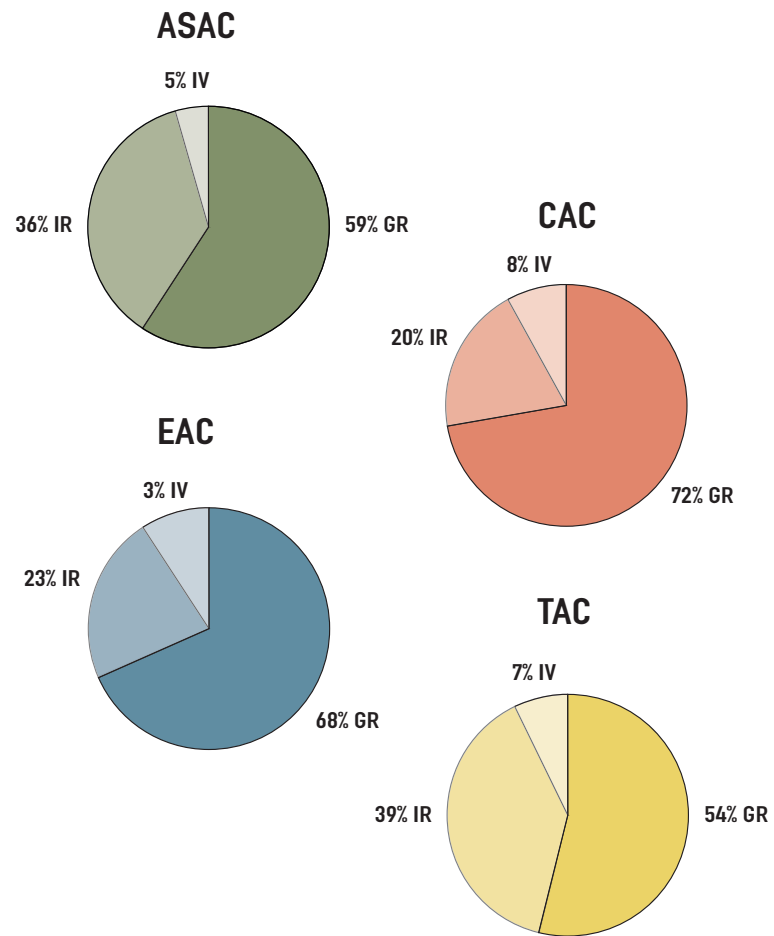
# Statistics

## Part A 2007-2008 Cycle Data

**Table 1  
Evaluations Conducted  
(Number of Programs)**

	ASAC	CAC	EAC	TAC	Total
General Review	13	73	314	76	476
Interim Report	8	20	104	55	187
Interim Visit	1	8	42	10	61
	22	101	460	141	724

### Results of Evaluations Conducted by Commission



#### Acronym Key

GR	General Review	NA	Not to Accredit
IR	Interim Review	NGR	Next General Review
IV	Interim Visit	SC	Show Cause

**Table 2  
Programs Visited  
by Curricular Area\***

	ASAC			CAC	EAC		TAC		Total
	Associate	Bachelor	Master		Bachelor	Master	Associate	Bachelor	
Aerospace					14	1			15
Agricultural					5				5
Architectural					3		1	1	5
Automotive								1	1
Bioengineering and Biomedical					19		1	3	23
Biological					6				6
Chemical					34				34
Civil					44		5	4	53
Computer					36	1	4	1	42
Computer Science				68					68
Construction					2		1	3	6
Drafting and Design (General)							1		1
Drafting and Design (Mechanical)							2		2
Electrical					55	2	17	17	91
Engineering Management						3			3
Engineering Mechanics						1			1
Engineering, Engineering Physics & Engineering Science					14			1	15
Environmental					11	1			12
Environmental, Health, and Safety		1							1
Geological					1				1
Industrial					20				20
Industrial Hygiene			8						8
Information Systems				11					11
Information Technology				3					3
Manufacturing					5		5		10
Marine							1		1
Materials					13				13
Mechanical					53	1	6	10	70
Metallurgical					2				2
Naval Architecture and Marine					2				2
Nuclear and Radiological					6				6
Ocean					1				1
Others		1			8		2	2	13
Petroleum					2				2
Safety	1	1							2
Software					4				4
Surveying and Geomatics		2			1		1		4
<b>TOTAL</b>	<b>1</b>	<b>5</b>	<b>8</b>	<b>82</b>	<b>365</b>	<b>6</b>	<b>41</b>	<b>49</b>	<b>557</b>

\* Individual programs may embrace more than one curricular area and, thus, may be counted more than once in this table.

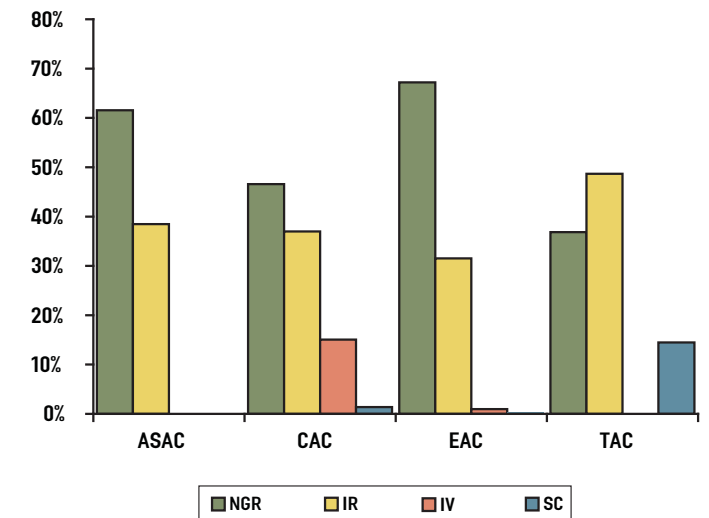
#### Acronym Key

GR	General Review	NA	Not to Accredit
IR	Interim Review	NGR	Next General Review
IV	Interim Visit	SC	Show Cause

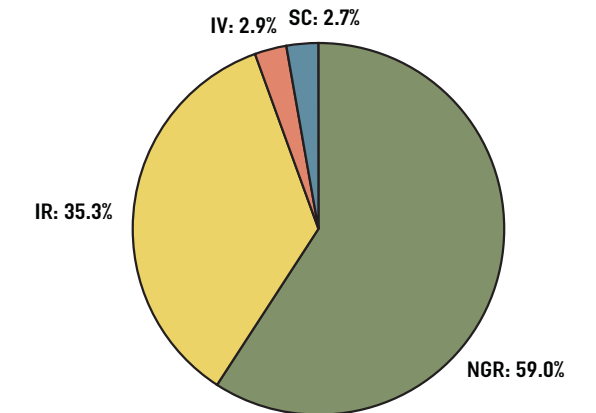
**Table 3  
Actions for General Reviews**

	ASAC		CAC		EAC		TAC		All	
	#	%	#	%	#	%	#	%	#	%
NGR	8	61.5%	34	46.6%	211	67.2%	28	36.8%	281	59.0%
IR	5	38.5%	27	37.0%	99	31.5%	37	48.7%	168	35.3%
IV	0	0.0%	11	15.1%	3	1.0%	0	0.0%	14	2.9%
SC	0	0.0%	1	1.4%	1	0.3%	11	14.5%	13	2.7%
NA	0	0.0%	0	0.0%	0	0.0%	0	0.0%	0	0.0%

### Actions for General Reviews, 2007-2008



### Actions for General Reviews Across All Commissions, 2007-2008

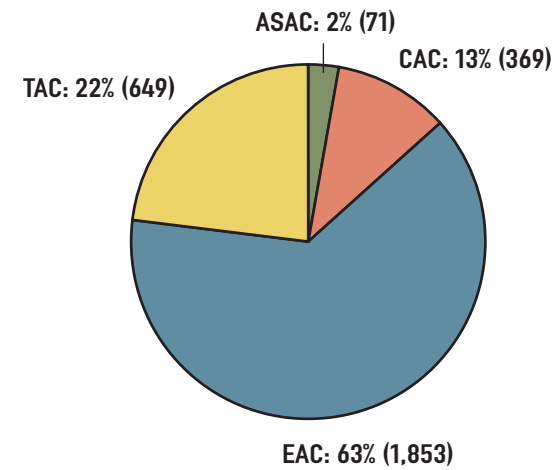


**Table 4**  
**Programs Accredited**  
**as of 10/1/08\***

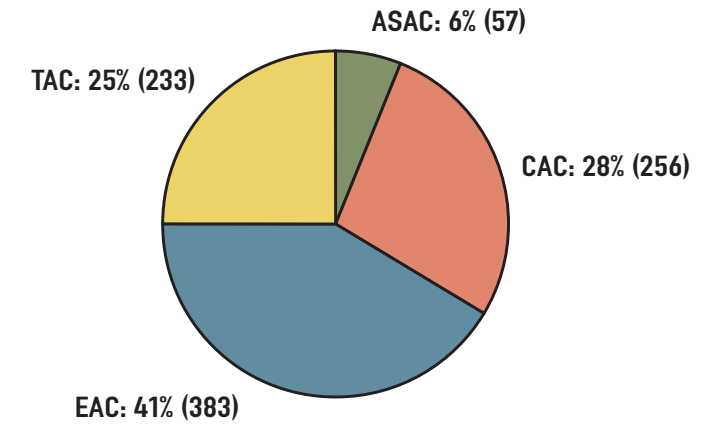
	ASAC			CAC	EAC		TAC		Total
	Associate	Bachelor	Master	Bachelor	Bachelor	Master	Associate	Bachelor	
Aeronautical							1	1	2
Aerospace					64	3			67
Agricultural					43				43
Air Conditioning							2	1	3
Architectural					16	1	17	8	42
Automotive								2	2
Bioengineering and Biomedical					61		3	5	69
Biological					9				9
Ceramic					4				4
Chemical					164	1			165
Civil					228	1	39	27	295
Computer					212	3	24	48	287
Computer Science				265					265
Construction					7		7	25	39
Drafting and Design (General)							1	1	2
Drafting and Design (Mechanical)							10	1	11
Electrical					308	4	98	113	523
Electromechanical							3	7	10
Engineering							5	15	20
Engineering Management					10	1			11
Engineering Mechanics					6				6
Engineering, Engineering Physics & Engineering Science					67				67
Environmental					51	7	4		62
Environmental, Health, and Safety		2	1						3
Geological					16				16
Health Physics		3	5						8
Industrial					97	1	6	8	112
Industrial Hygiene		6	35						41
Information Systems				36					36
Information Technology				9					9
Instrumentation and Control Systems							2	1	3
Manufacturing					22	1	9	26	58
Marine								3	3
Materials					64				64
Mechanical					291	2	62	67	422
Metallurgical					9				9
Mining					13				13
Naval Architecture and Marine					11				11
Nuclear and Radiological					20	1	2	2	25
Ocean					7	1			8
Others		1		2	34	3	13	15	67
Petroleum					17				17
Safety	1	8	2						11
Software					17				17
Surveying and Geomatics		10			6		7	5	28
Telecommunications							2	5	7
<b>TOTAL</b>	<b>1</b>	<b>30</b>	<b>43</b>	<b>312</b>	<b>1874</b>	<b>30</b>	<b>317</b>	<b>385</b>	<b>2992</b>

\* Individual programs may embrace more than one curricular area and, thus, may be counted more than once in this table.

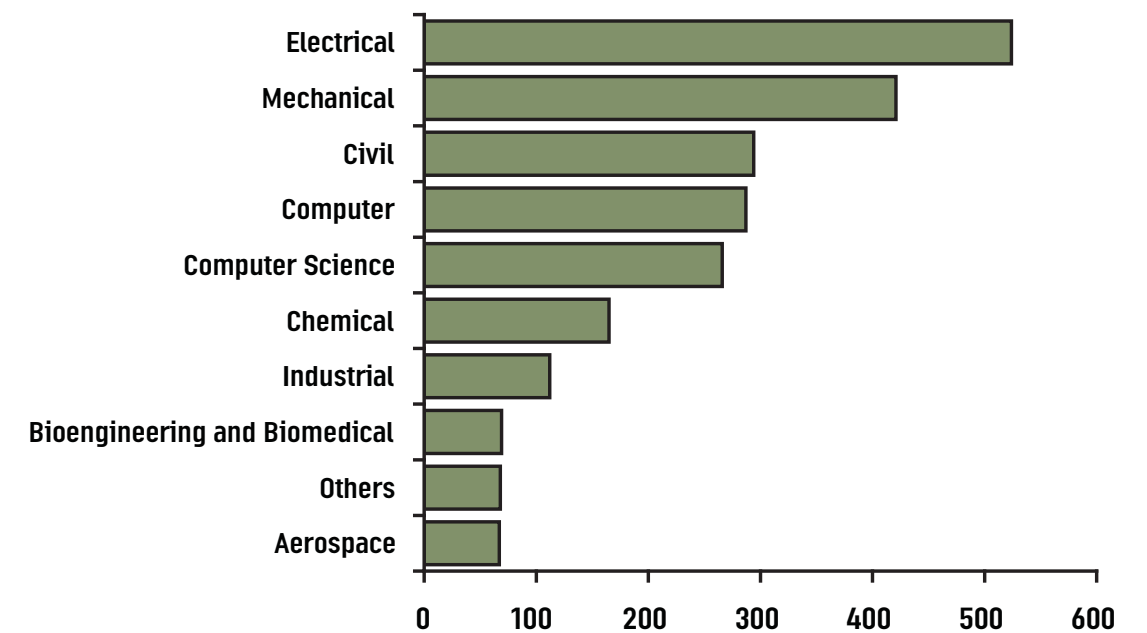
**Accredited Programs by Commission**



**Institutions by Commission**



**10 Largest Curricular Areas by Number of Accredited Programs**



# Statistics

## Part B Accreditation Trend Data

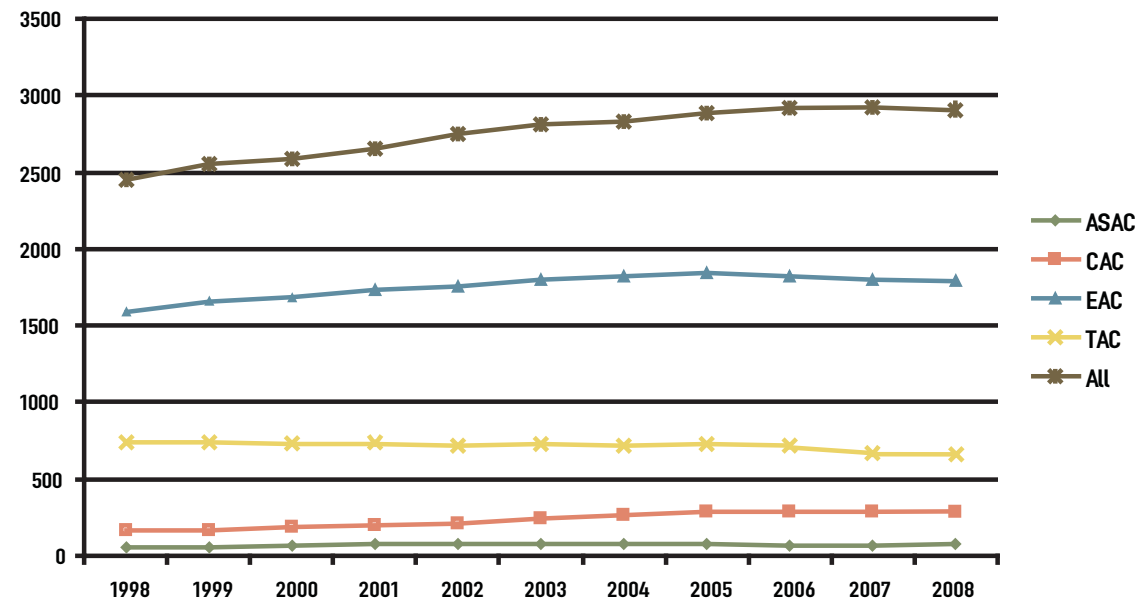
**Table 1**  
Number of Accredited Programs and Institutions  
Having Accredited Programs, 1998–2008\*\*

	ASAC		CAC		EAC		TAC		All*	
	Pgms	Insts	Pgms	Insts	Pgms	Insts	Pgms	Insts	Pgms	Insts
1998	55	45	162	161	1571	330	699	239	2480	552
1999	59	46	166	165	1629	337	702	241	2549	559
2000	62	48	176	173	1667	342	691	242	2589	567
2001	71	53	189	183	1702	347	696	242	2651	573
2002	70	53	204	191	1732	349	691	235	2689	572
2003	73	54	230	204	1767	358	698	233	2758	583
2004	74	55	253	219	1810	365	702	234	2830	591
2005	71	56	280	236	1831	370	709	237	2881	600
2006	75	53	308	236	1883	371	702	233	2958	597
2007	75	53	309	237	1871	368	671	228	2916	591
2008	71	57	309	256	1853	383	649	233	2871	612

\* Individual programs may embrace more than one curricular area and, thus, the totals may be lower than the sums of the commissions.

\*\* Data above may differ from that reported in previous versions of this publication as a result of retroactive accreditation.

**Increase/Decrease in Number of Accredited Programs by Commission, 1998–2008**



**Table 2**  
Actions for General Reviews, 1998–2008\* [percentages]

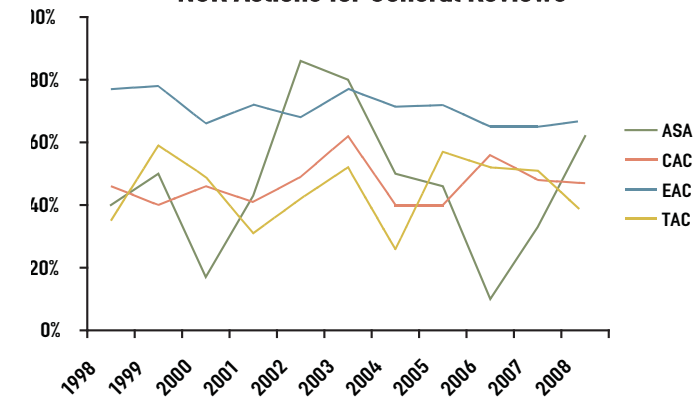
	ASAC					CAC*				
	NGR	IR	IV	SC	NA	NGR	IR	IV	SC	NA
1998	40%	40%	10%	5%	5%	46%	23%	31%	0%	0%
1999	50%	25%	25%	0%	0%	40%	26%	20%	14%	0%
2000	17%	83%	0%	0%	0%	46%	29%	11%	7%	7%
2001	43%	57%	0%	0%	0%	41%	27%	24%	2%	5%
2002	86%	14%	0%	0%	0%	49%	27%	16%	5%	3%
2003	80%	0%	20%	0%	0%	62%	10%	14%	10%	3%
2004	50%	43%	7%	0%	0%	40%	40%	8%	8%	4%
2005	46%	31%	23%	0%	0%	40%	46%	10%	2%	2%
2006	10%	90%	0%	0%	0%	56%	32%	12%	0%	0%
2007	33%	56%	0%	11%	0%	48%	39%	11%	2%	0%
2008	62%	38%	0%	0%	0%	47%	37%	15%	1%	0%

	EAC					TAC				
	NGR	IR	IV	SC	NA	NGR	IR	IV	SC	NA
1998	77%	12%	9%	3%	1%	35%	28%	29%	7%	3%
1999	78%	11%	8%	3%	1%	59%	34%	6%	0%	0%
2000	66%	22%	11%	1%	1%	49%	38%	12%	1%	0%
2001	72%	13%	14%	1%	1%	31%	38%	5%	0%	0%
2002	68%	21%	11%	1%	0%	42%	52%	7%	0%	0%
2003	77%	17%	5%	1%	0%	52%	47%	0%	1%	0%
2004	71%	20%	7%	1%	1%	26%	65%	9%	0%	0%
2005	72%	22%	5%	1%	0.4%	57%	32%	10%	0%	1%
2006	65%	26%	9%	0%	0%	52%	42%	6%	0%	0%
2007	65%	30%	5%	0%	0%	51%	43%	3%	1%	1%
2008	67%	32%	1%	0%	0%	37%	49%	0%	14%	0%

\*CSAC/CSAB actions are shown as the ABET equivalents for 1998–2001: NGR (6V), IR (6VR), IV (3V), SC, and NA.

**NGR Actions for General Reviews**



**IV Actions for General Reviews**

